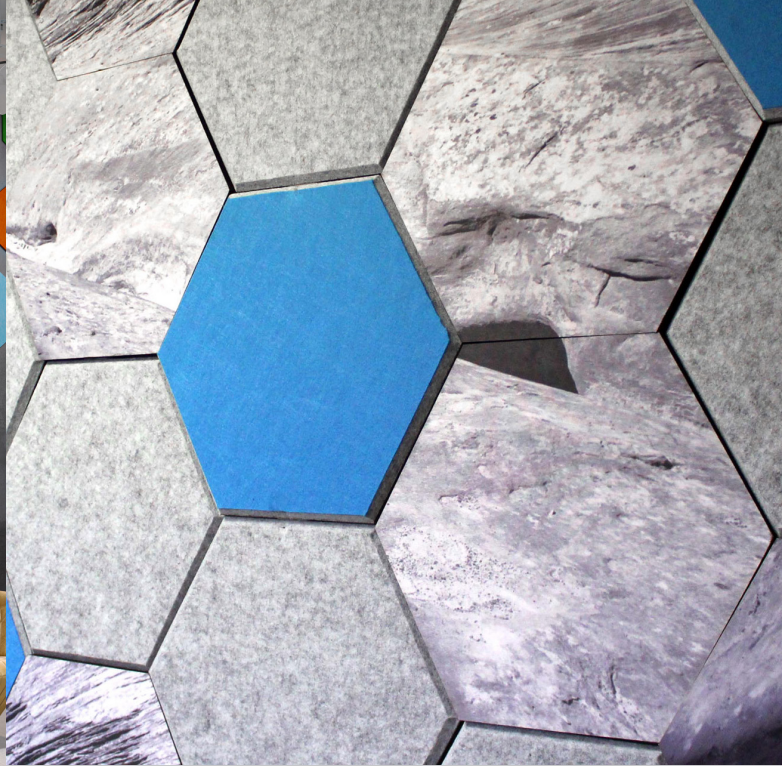




HEX

Fräsch was founded on the belief that creating healthy and beautiful office environments leads to a happier and highly motivated workforce.



HEX

Acoustical Wall Tile

This simple geometric pattern adds dimension and depth to any environment. Each individual hex shaped tile aligns tightly to the next to form the overall shape. HEX FLAT acoustic tiles are customizable with a range of colors. Easily glues to the wall and cuts to fit any wall size.

Application Wall

	L	W	H	WEIGHT
HEX TILE	15.13"	13.11"	.35"	.22 lbs.
HEX TILE [SET OF 32]	96"	48"	.35"	7 lbs.

Hardware

Default: Roberts 3095 Carpet Adhesive, Heavy Duty Liquid Nail

Material Content 9 mm 100% PET (55% recycled content)

Fire Rating Class A per ASTM E-84, based on 9mm white

Acoustics

Frequency (Hz)	250	500	1K	2K	NRC
NRC	0.04	0.16	0.40	0.63	(0.30-0.75)
Sabins per m ²	2.87	11.48	29.15	45.01	

Test was conducted while product was in its actual installation setting

All NRC testings assumes one face/one object and does not account for the product thickness

Environment

Low VOC
Post-Consumer Recycled Content
100% Recyclable

Installation

Simply glue one HEX FLAT at a time and easily cuts to fit your wall space. Another alternative is to lay out your space and mount the Impaler Clip to the wall with sheetrock screws and press HEX FLAT to secure it to the wall.

Country of Origin

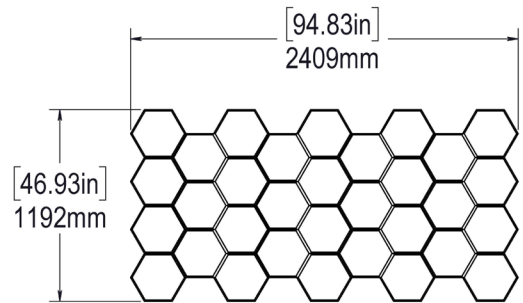
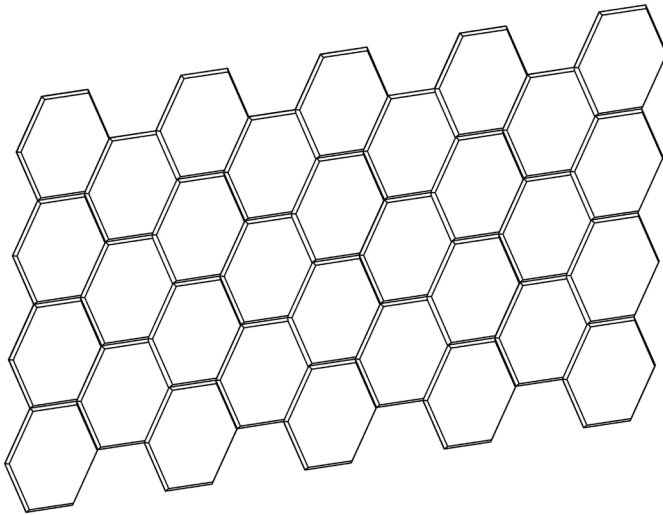
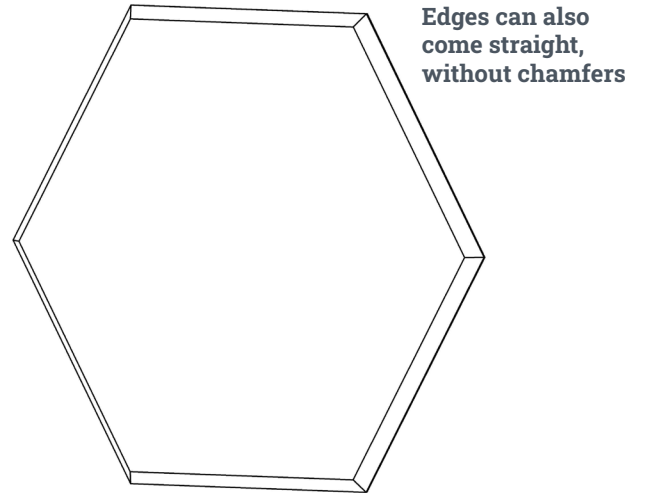
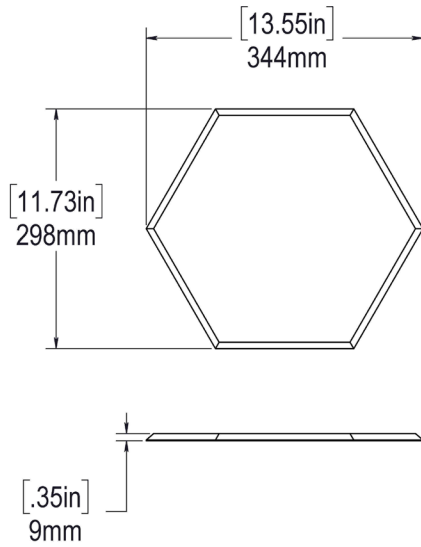
USA

Warranty

2 Years

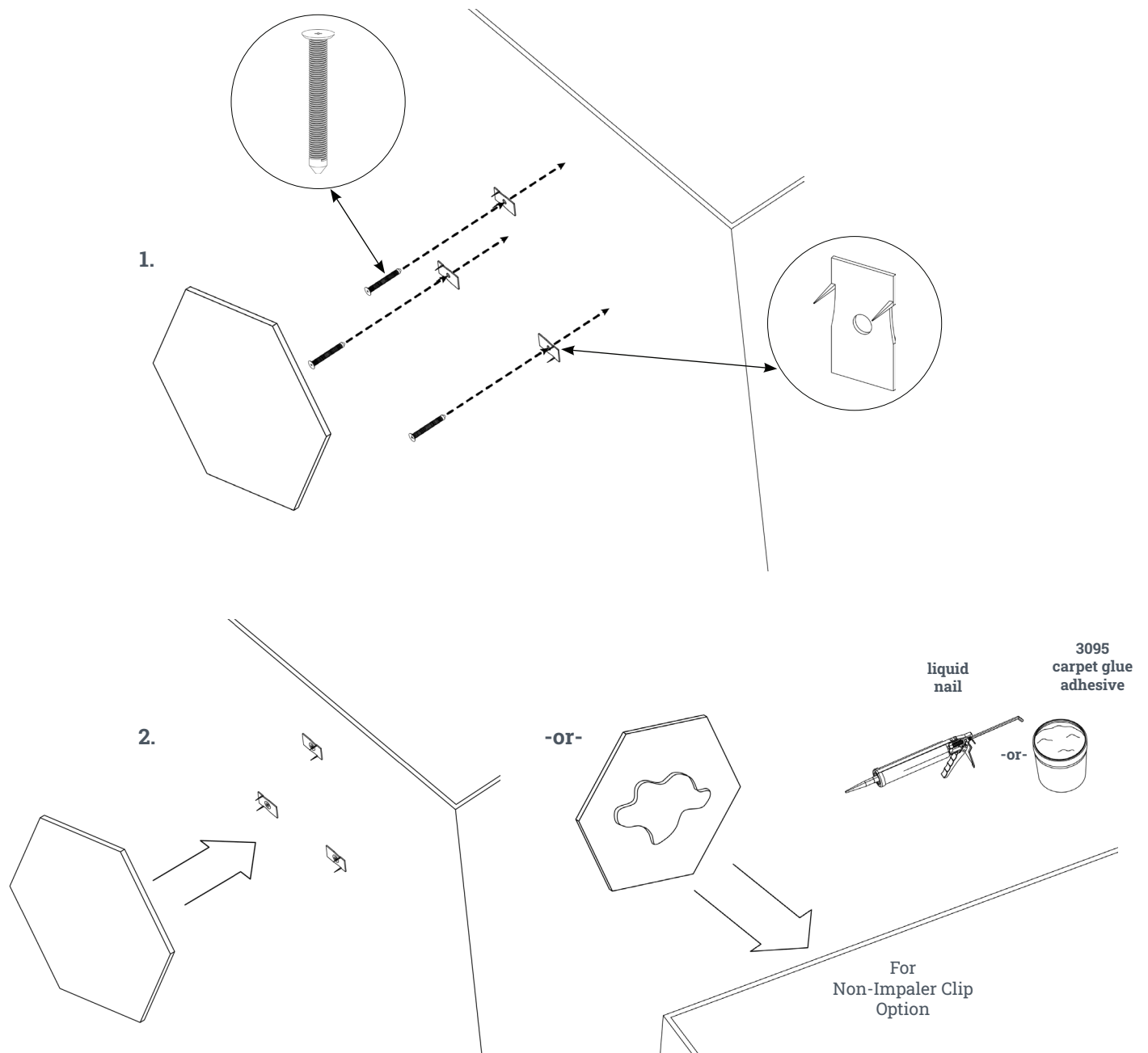
HEX

AVAILABLE DIMENSIONS



HEX

INSTALLATION

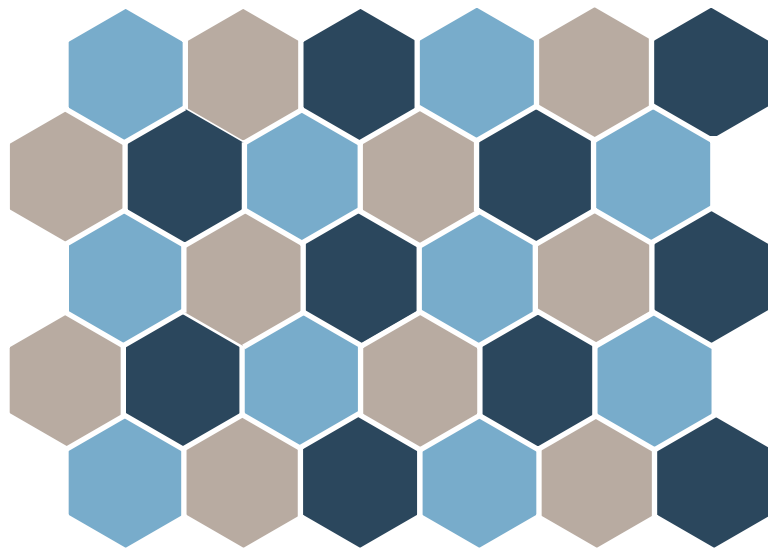


HEX

SUGGESTED ARRANGEMENTS



Pattern 1



Pattern 2