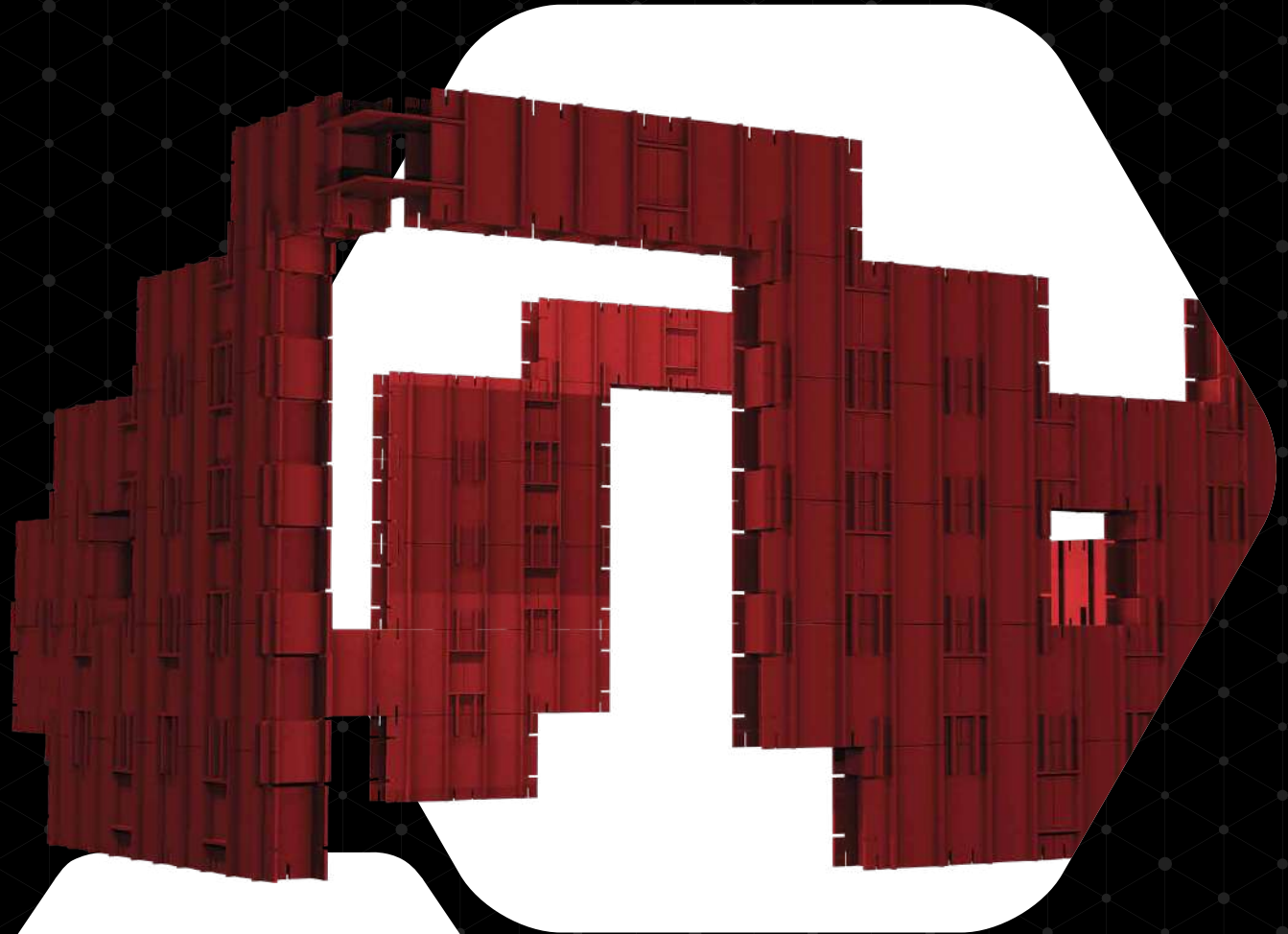


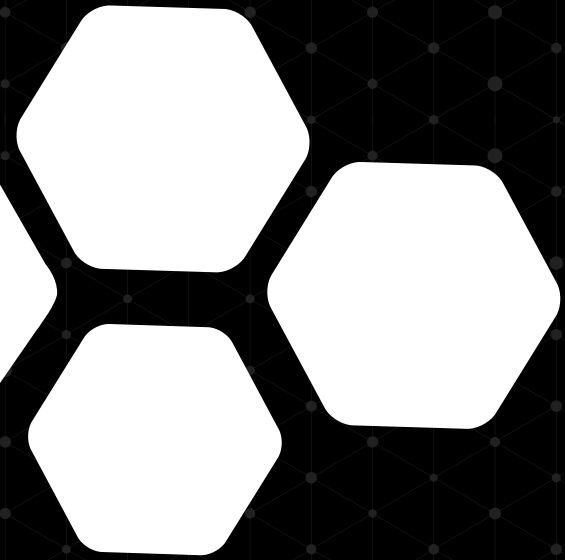
KAYA

ASSEMBLY INSTRUCTIONS



1Six8

Designers of acoustic and **environmentally sustainable** office solutions



KAYA

ASSEMBLY INSTRUCTIONS

COMPONENTS



Single face



Double face



Triple face



Quad face



Junction connector



Junction connector



Junction connector



Lateral brace



General connector

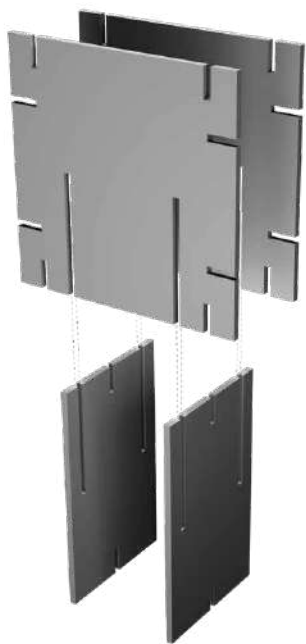


Vertical connector

KAYA

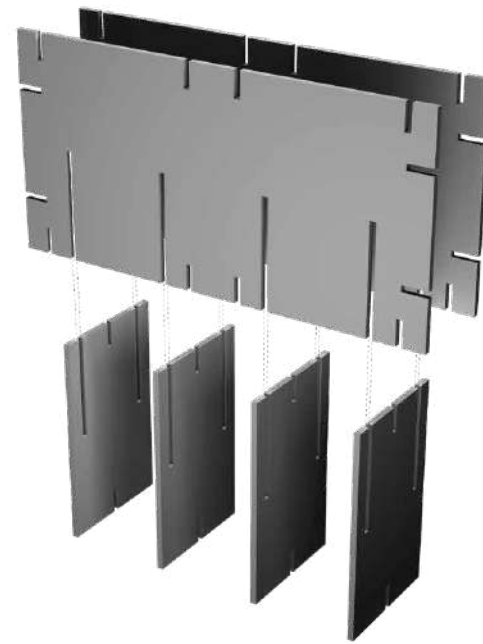
ASSEMBLY INSTRUCTIONS

STEP 1



- Insert a lateral brace into each friction slot of the two single faces.

STEP 2

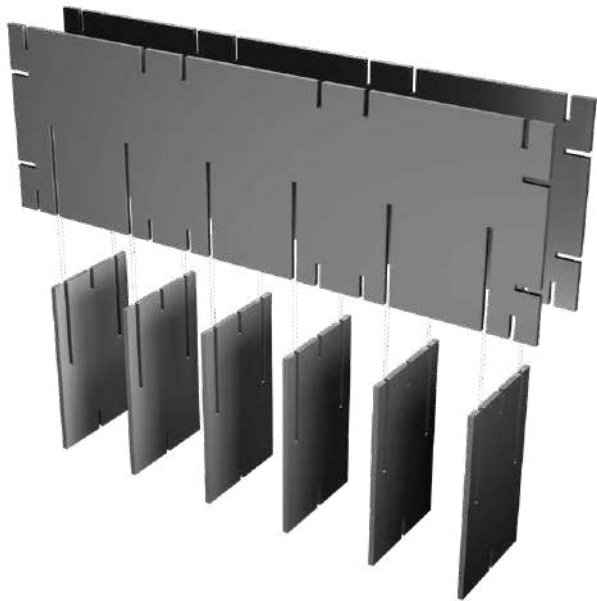


- Insert a lateral brace into each friction slot of the two double faces.

KAYA

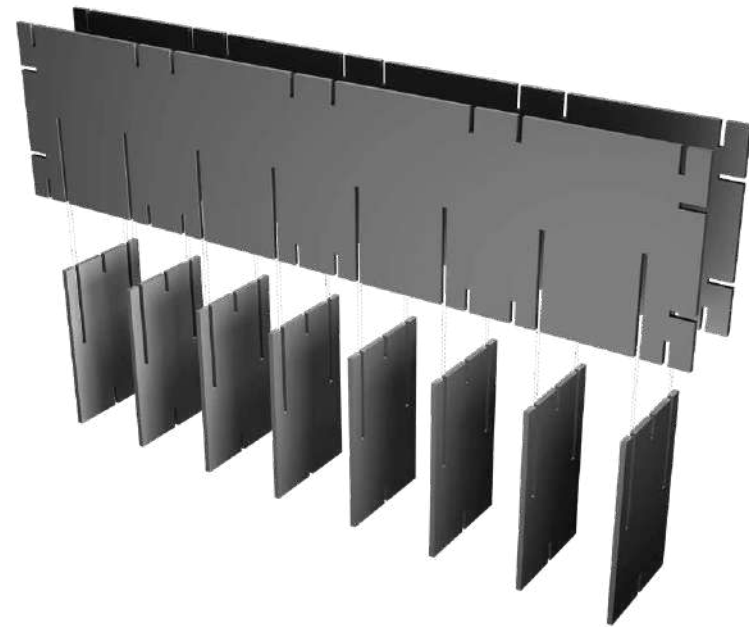
ASSEMBLY INSTRUCTIONS

STEP 3



- Insert a lateral brace into each friction slot of the two triple faces.

STEP 4

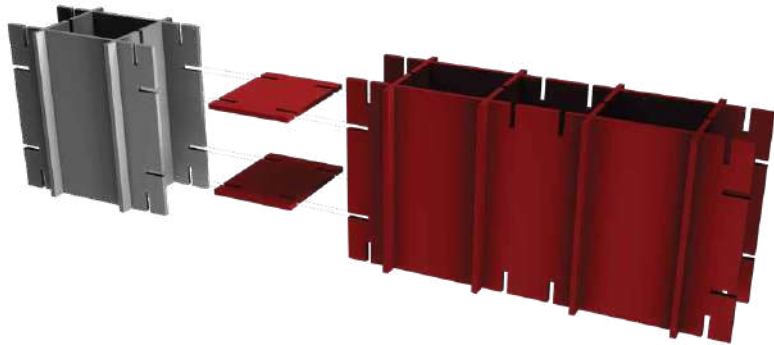


- Insert a lateral brace into each friction slot of the two quad faces.

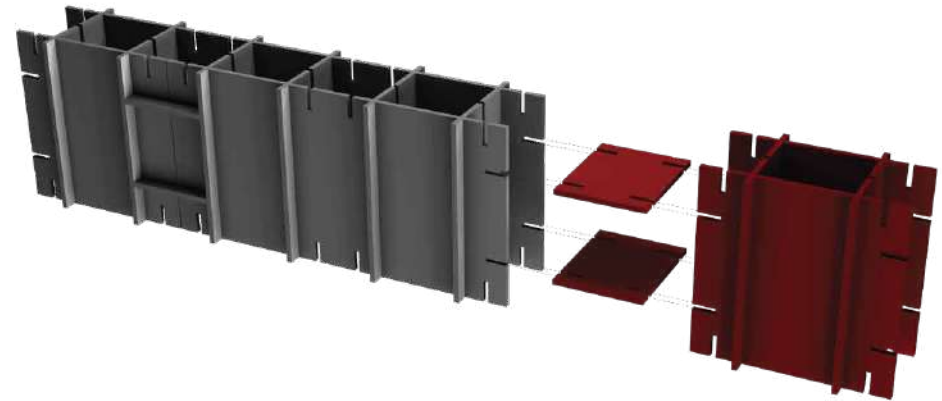
KAYA

ASSEMBLY INSTRUCTIONS

STEP 5



STEP 6

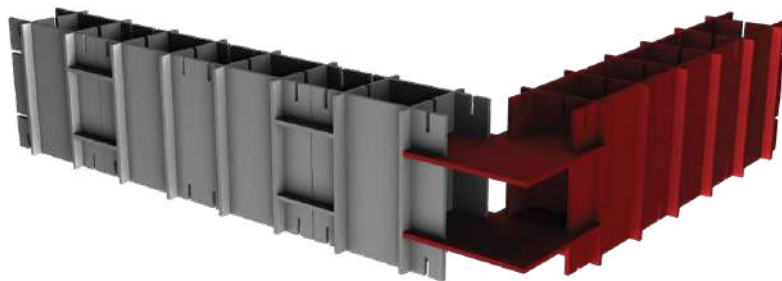


- Once all block modules have been assembled begin to build the structure.
- Connect desired block modules horizontally by inserting the general connectors as seen in step 2, 3 and 4 .
- It is advised to complete the first layer to your desired layout before building vertically.

KAYA

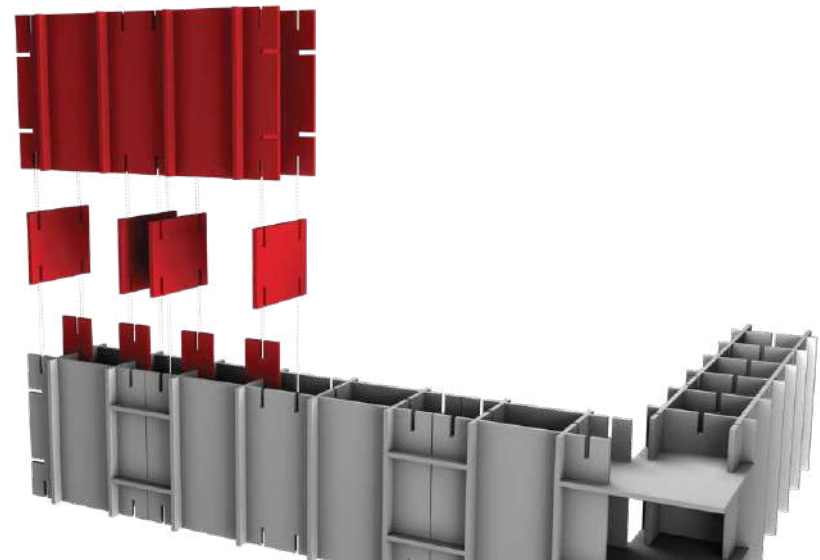
ASSEMBLY INSTRUCTIONS

STEP 7



- Use the junction connectors to change direction.
- Junction connectors are available in 90, 180 and 360 degrees enabling you to run in multiple directions.

STEP 8

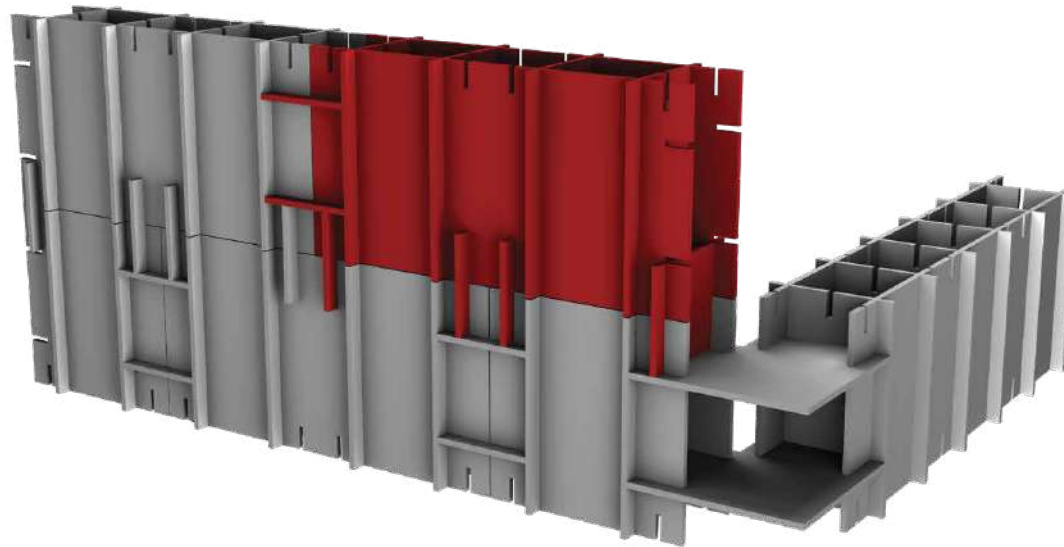


- Once your first layer is complete begin to build the second layer using the vertical connectors and general connectors as shown above and in step 6.

KAYA

ASSEMBLY INSTRUCTIONS

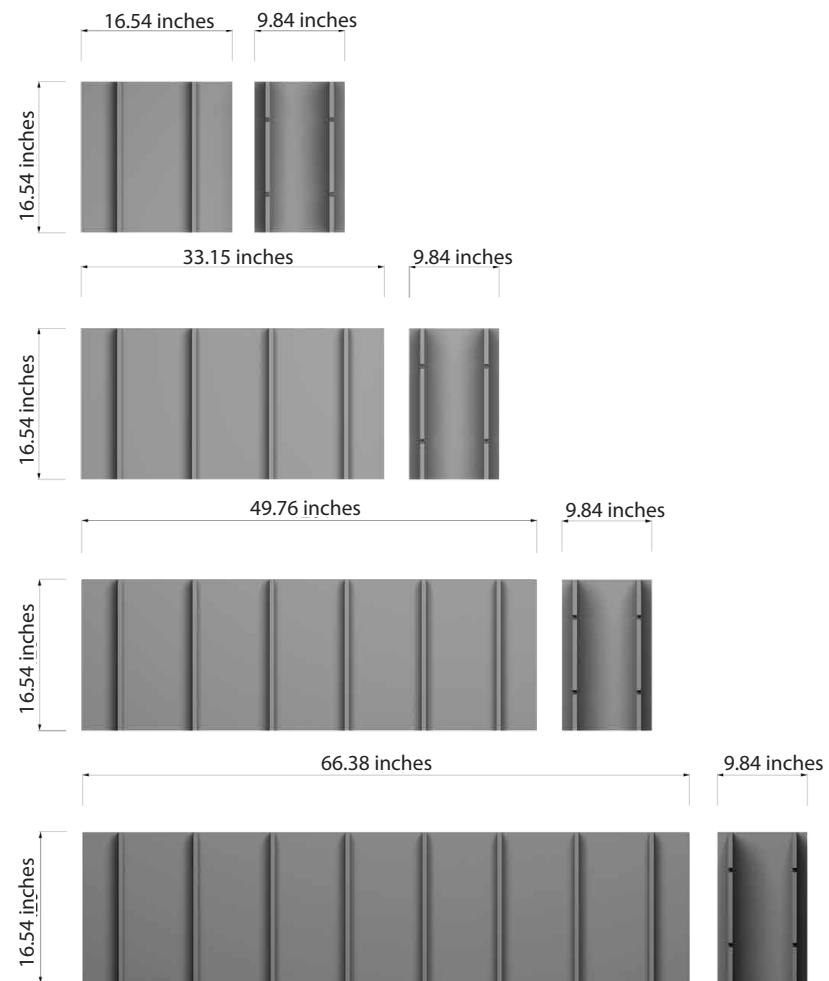
STEP 9



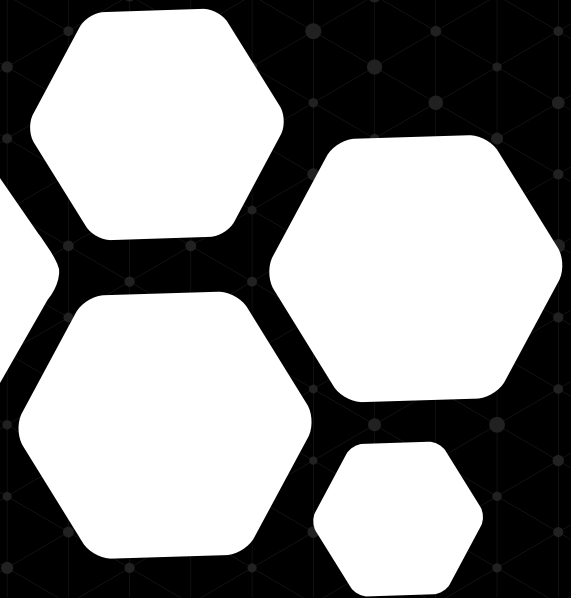
- Complete your second layer and then move onto the third and so on.

KAYA

SCREENING ACOUSTIC SYSTEM



14six8



KAYA

ASSEMBLY INSTRUCTIONS

Telephone

Francois: +44 7305 349443

Daniel: +27 82 331 8319

Email

studio@14six8.com

Website

www.14six8.com

Address

71-75, Shelton Street, Covent Garden,
London, WC2H 9JQ, United Kingdom